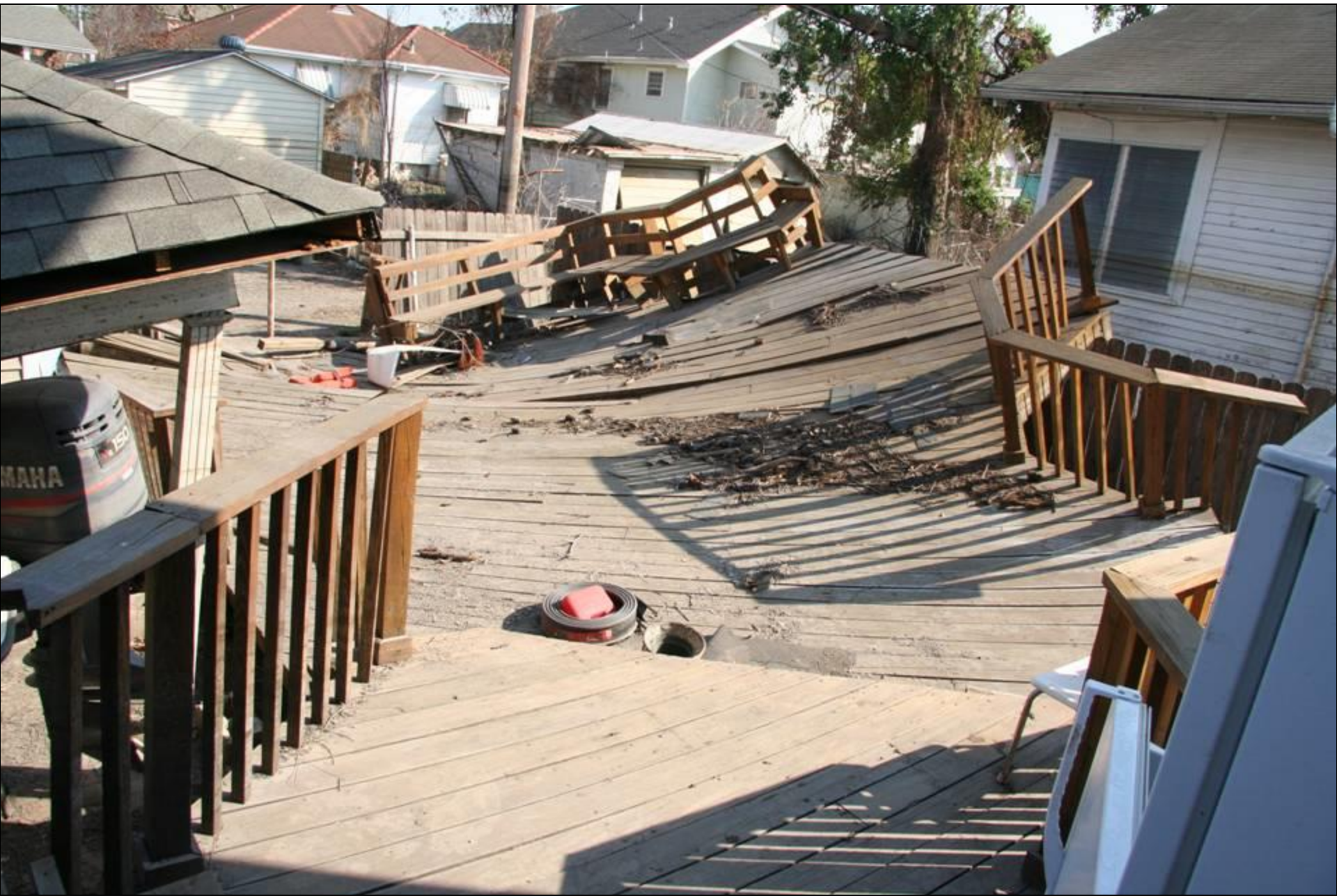


Photos of 2005 Gulf Coast Disaster Debris Management *Treated Wood Photos*

Timothy G Townsend, PhD, PE
Professor of Environmental Engineering Sciences
Engineering School of Sustainable Infrastructure and Environment
<http://townsend.essie.ufl.edu>















Homes and belongings damaged by New Orleans flood waters.
Treated wood bundle floated and landed on house.











Utility pole cut-off waste

























Photos of 2005 Gulf Coast Disaster Debris Management *Treated Wood Photos*

Timothy G Townsend, PhD, PE
Professor of Environmental Engineering Sciences
Engineering School of Sustainable Infrastructure and Environment
<http://townsend.essie.ufl.edu>